

# Stainless Steel Vertical Multistage Pump SVM(T)1

## Applications

- Water supply
- Industry pressure boosting
- Industry liquid transfer
- Water treatment
- Irrigation

## Motor

- Fitted with a totally enclosed fan-cooled, 2-pole motor
- Enclosure class: IP55
- Insulation class: F
- Supply voltage: 50Hz or 60Hz

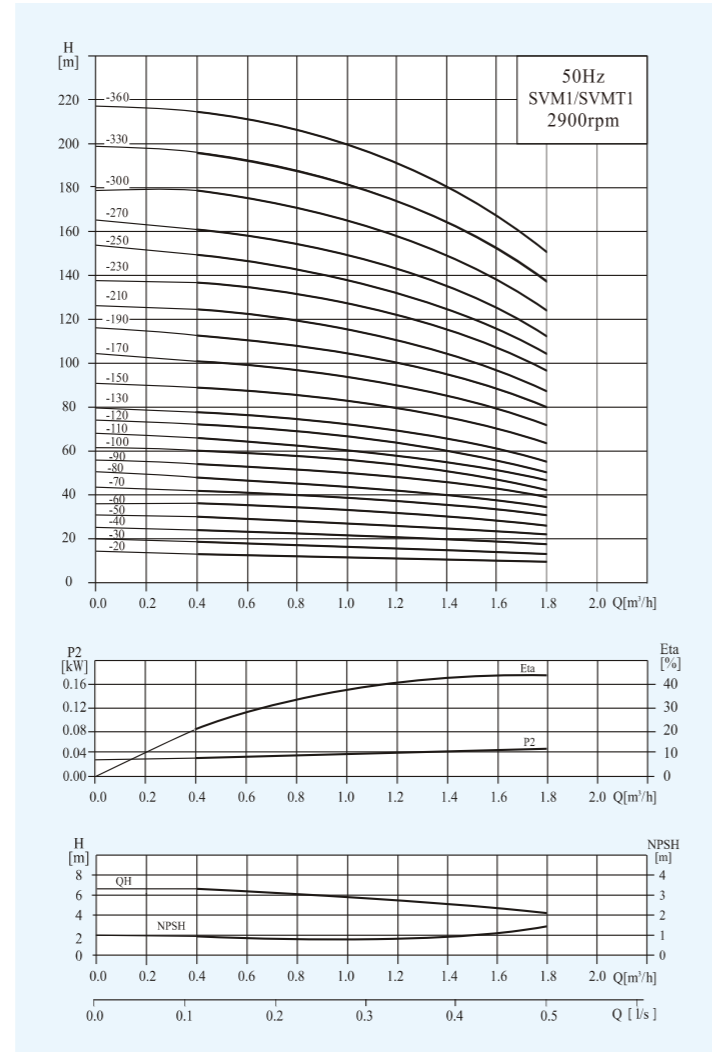
## Operation conditions

- Thin, clean, non-explosive liquids, not containing solid particles or fibers liquid
- Liquid temperature:  
normal temperature type:  $-15^{\circ}\text{C} \sim +70^{\circ}\text{C}$   
hot water type:  $-15^{\circ}\text{C} \sim +105^{\circ}\text{C}$
- Ambient temperature: maximum  $+40^{\circ}\text{C}$
- Altitude: maximum 1000m

## Material

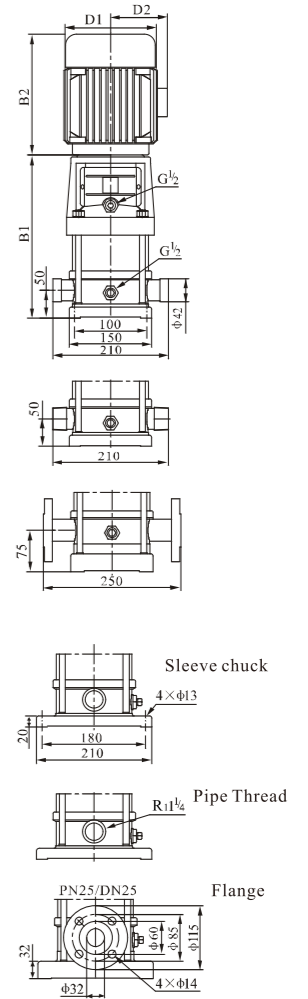
- Inlet&outlet chamber: Cast iron/Stainless steel(304/316)
- Impeller: Stainless steel(304/316)
- Shell: Stainless steel(304/316)
- Shaft: Stainless steel(304/316)
- Coupling: Ductile iron
- Bearing: Tungsten carbide
- Mechanical seal: Tungsten carbide/Graphite

## Performance Curves



## Performance Table

Model	Associated motor(kW)	Q (m <sup>3</sup> /h)	H (m)							
			0.4	0.6	0.8	1.0	1.2	1.4	1.6	1.8
SVM1-20	0.37	13	12.5	12	11.5	11	10.5	10	9.5	
SVM1-30	0.37	19	18	17.5	17	16.5	16	15	14	
SVM1-40	0.37	24	23.5	23	22.5	21.5	21	19	18	
SVM1-50	0.37	30	29.6	29	28	27	26	24	22	
SVM1-60	0.37	36	35.5	35	33.5	33	31	28	26	
SVM1-70	0.37	42	41	40.5	39	38	36	33	30	
SVM1-80	0.55	48	47	46	45	43	41	38	34	
SVM1-90	0.55	54	53	52	51	49	46	43	39	
SVM1-100	0.55	60	59	58	57	54	51	48	43	
SVM1-110	0.55	66	65	63	61	59	56	52	47	
SVM1-120	0.75	72	71	69	67	64	61	57	51	
SVM1-130	0.75	78	77	75	73	69	66	62	55	
SVM1-150	0.75	89	88	86	84	79	76	71	63	
SVM1-170	1.1	101	99	97	95	89	86	80	71	
SVM1-190	1.1	113	110	108	106	99	96	89	79	
SVM1-210	1.1	124	122	120	117	110	106	98	87	
SVM1-230	1.1	137	133	131	128	121	116	107	96	
SVM1-250	1.5	149	145	143	139	131	126	116	104	
SVM1-270	1.5	161	157	155	150	141	136	125	112	
SVM1-300	1.5	178	175	171	166	157	150	139	124	
SVM1-330	2.2	196	192	188	183	173	165	154	137	
SVM1-360	2.2	214	210	205	200	190	181	169	151	



## Dimension & Weight

Model	Size (mm)					Net Weight (kg)
	B1	B2	B1+B2	D1	D2	
SVM1-20	258	225	483	148	117	20
SVM1-30	276	225	501	148	117	20
SVM1-40	294	225	519	148	117	21
SVM1-50	312	225	537	148	117	21
SVM1-60	330	225	555	148	117	22
SVM1-70	348	225	573	148	117	23
SVM1-80	366	225	591	148	117	24
SVM1-90	384	225	609	148	117	25
SVM1-100	402	225	627	148	117	26
SVM1-110	420	225	645	148	117	26
SVM1-120	448	245	693	170	142	29
SVM1-130	466	245	711	170	142	30
SVM1-150	502	245	747	170	142	31
SVM1-170	538	245	783	170	142	33
SVM1-190	574	245	819	170	142	34
SVM1-210	610	245	855	170	142	35
SVM1-230	646	245	891	170	142	36
SVM1-250	692	290	982	190	155	42
SVM1-270	728	290	1018	190	155	43
SVM1-300	782	290	1072	190	155	45
SVM1-330	836	290	1126	190	155	49
SVM1-360	890	290	1180	190	155	51