

Applications

- Water supply
- Industry pressure boosting
- Industry liquid transfer
- Water treatment
- Irrigation

Motor

- Fitted with a totally enclosed fan-cooled, 2-pole motor
- Enclosure class: IP55
- Insulation class: F
- Supply voltage: 50Hz or 60Hz

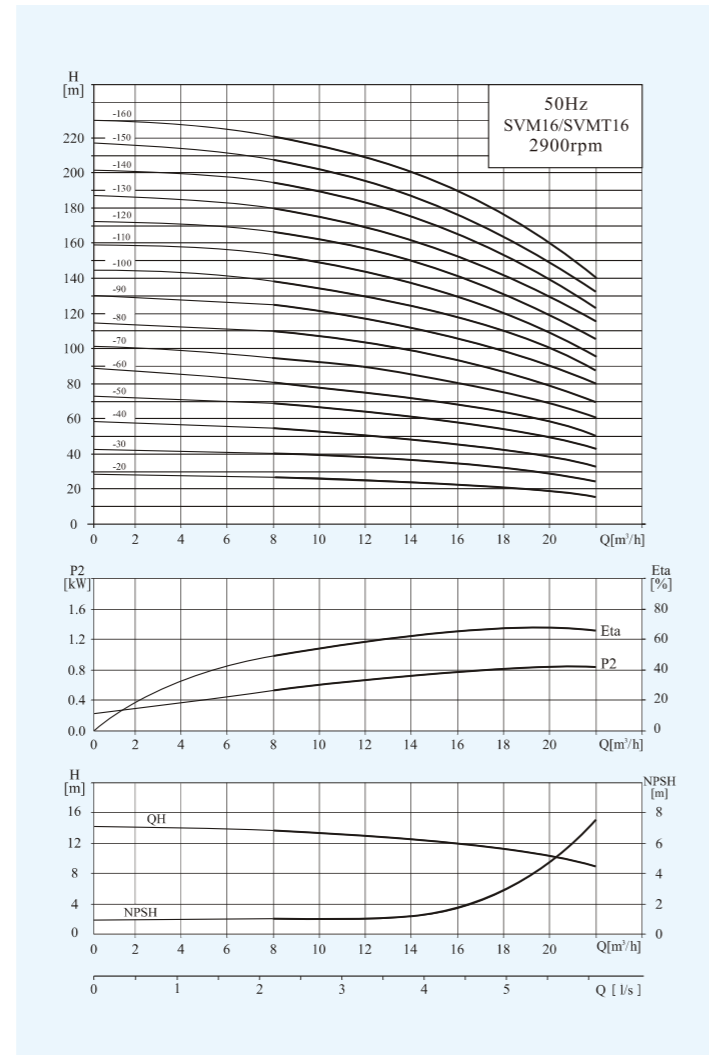
Operation conditions

- Thin, clean, non-explosive liquids, not containing solid particles or fibers liquid
- Liquid temperature:
normal temperature type: -15°C~+70°C
hot water type: -15°C~+105°C
- Ambient temperature: maximum +40°C
- Altitude: maximum 1000m

Material

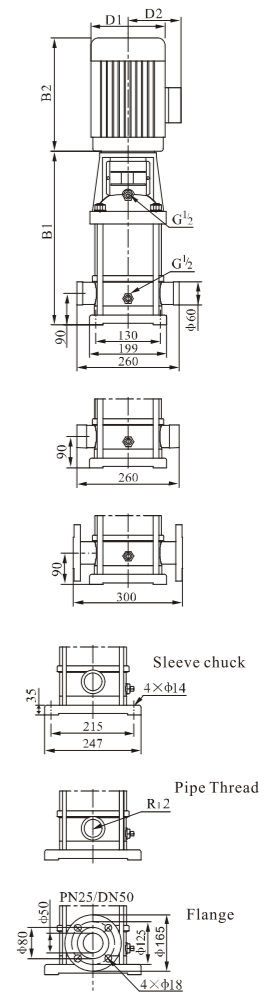
- Inlet&outlet chamber: Cast iron/Stainless steel(304/316)
- Impeller: Stainless steel(304/316)
- Shell: Stainless steel(304/316)
- Shaft: Stainless steel(304/316)
- Coupling: Ductile iron
- Bearing: Tungsten carbide
- Mechanical seal: Tungsten carbide/Graphite

Performance Curves



Performance Table

Model	Associated motor(kW)	Q (m³/h)	H (m)									
			8	10	12	14	16	18	20	22		
SVM16-20	2.2	27	26	25	24	22	21	19	16			
SVM16-30	3.0	41	40	38	37	34	32	29	25			
SVM16-40	4.0	54	53	52	49	46	43	38	34			
SVM16-50	5.5	68	67	65	62	58	54	48	43			
SVM16-60	5.5	82	80	78	74	70	64	58	52			
SVM16-70	7.5	96	95	91	87	82	76	68	61			
SVM16-80	7.5	110	108	104	99	94	86	77	70			
SVM16-100	9.2	138	136	131	125	118	109	97	87			
SVM16-120	11	166	162	157	150	141	130	116	105			
SVM16-140	15	194	190	184	175	166	152	136	122			
SVM16-160	15	222	217	210	200	189	174	156	140			



Dimension & Weight

Model	Size (mm)					Net Weight(kg)
	B1	B2	B1+B2	D1	D2	
SVM16-20	397	290	687	190	155	42
SVM16-30	452	345	797	197	165	50
SVM16-40	497	355	852	230	188	59
SVM16-50	562	390	952	260	208	76
SVM16-60	607	390	997	260	208	77
SVM16-70	652	390	1042	260	208	84
SVM16-80	697	390	1087	260	208	86
SVM16-100	787	390	1177	260	208	106
SVM16-120	965	500	1465	330	255	161
SVM16-140	1055	500	1555	330	255	174
SVM16-160	1145	500	1645	330	255	178